

BLACKHAWK ENGINE+UPGRADE

FOR THE CESSNA CARAVAN SERIES



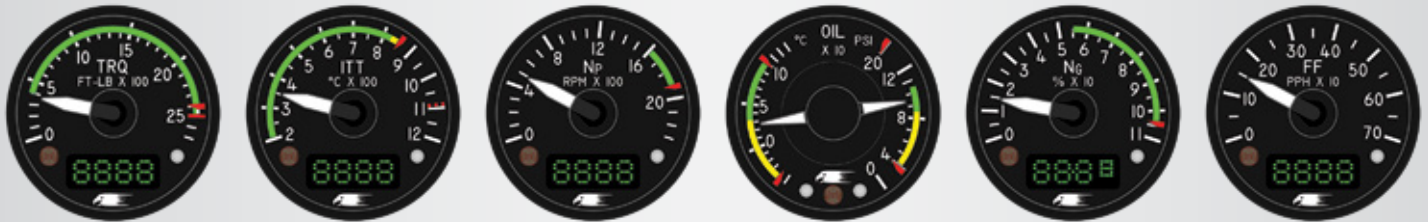
Multiply your power and your revenue generation capability with the **Blackhawk Vx Engine+ Upgrade**. Blackhawk makes it easy, with a quick, ultra-cost-effective installation that delivers value, performance and enough power to impress any pilot. Replace your tired 600/675 horsepower PT6A-114/114A engine with a **factory-new PT6A-42A** powerplant for like-new levels of performance and load carrying capabilities.

Blackhawk Vx Engine+ Upgrade Performance Comparison

No Wind, Paved Runway, No Pod

| Take-Off Distance, feet, MTOW | Stock Caravan 208 | | Caravan 208 with Vx Engine+ Upgrade | | Stock Grand Caravan 208B | | Grand Caravan 208B with Vx Engine+ Upgrade | |
|---------------------------------|-------------------|-------------------|-------------------------------------|-------------------|--------------------------|-------------------|--|-------------------|
| | Ground Roll | Over 50' Obstacle | Ground Roll | Over 50' Obstacle | Ground Roll | Over 50' Obstacle | Ground Roll | Over 50' Obstacle |
| Sea Level, ISA | 1,160 | 2,055 | 930 (-20%) | 1,680 (-18%) | 1,365 | 2,420 | 1,035 (-24%) | 1,835 (-24%) |
| Sea Level, ISA+20°C | 1,295 | 2,278 | 1,050 (-19%) | 1,765 (-23%) | 1,533 | 2,703 | 1,185 (-23%) | 2,030 (-25%) |
| 4,000 ft. elevation, ISA | 1,430 | 2,500 | 1,130 (-21%) | 2,030 (-19%) | 1,710 | 3,000 | 1,245 (-27%) | 2,115 (-30%) |
| 4,000 ft. elevation, ISA+20°C | 1,620 | 2,810 | 1,325 (-18%) | 2,330 (-17%) | 1,930 | 2,810 | 1,325 (-31%) | 2,330 (-17%) |
| Climb Performance, fpm | ISA | ISA+20°C | ISA | ISA+20°C | ISA | ISA+20°C | ISA | ISA+20°C |
| 4,000 ft. altitude | 1,150 | 980 | 1,550 (+35%) | 1,180 (+20%) | 900 | 675 | 1,228 (+36%) | 960 (+42%) |
| 8,000 ft. altitude | 1,090 | 795 | 1,270 (+17%) | 1,025 (+29%) | 840 | 575 | 1,054 (+25%) | 804 (+40%) |
| Cruise Performance, ktas | ISA | ISA+20°C | ISA | ISA+20°C | ISA | ISA+20°C | ISA | ISA+20°C |
| 12,000 ft. altitude | 178 | 164 | 187 (+5%) | 184 (+12%) | 173 | 156 | 189 (+9%) | 186 (+19%) |

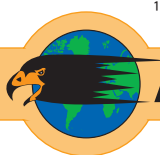
HAWKEYE DigiLog Smart Engine Instrument for the Blackhawk Vx Engine+ Upgrade



The Blackhawk Vx Engine+ Upgrade Package Includes

- + Factory-New Pratt & Whitney Canada (P&WC) PT6A-42A Engine²
- + Pratt & Whitney Canada Enhanced New-Engine Warranty
- + Choice of Factory-New Propeller and Spinner²
 - MT 96" 5-Blade Natural Composite Propeller¹
 - MT 98" 4-Blade Natural Composite Propeller
 - Hartzell 100" 4-Blade Wide-Chord Aluminum Propeller
 - Hartzell 104" 3-Blade Aluminum Propeller
- + Choice of Factory-New Dual Exhaust Stacks²
 - Globe Climb Stacks (Lowers IIT during Climb)
 - Frakes Speed Stacks (Increases Cruise Speed up to 5 Knots)
- + New Carbon-Fiber Composite Cowling & High Efficiency Inlet²
- + New True Blue Power Advanced Lithium-Ion Battery (30 lbs. Lighter)
- + New Hawkeye DigiLog Smart Engine Instruments²
- + New 40% Larger Oil Cooler²
- + Newly Designed Engine Bleed Valve Ducting System (For Smoother Low-Power Setting Operations)
- + Optimized AC Intake (Significantly Lowers Cabin Temperature)
- + Optional: 325 amp Starter Generator (Reduces Start Times and Temps)²
- + Globally Approved Flight Manual Supplement
- + STC Paperwork and Instructions for Continued Airworthiness
- + P&WC PT6 Line Maintenance Entitlement Training
- + Blackhawk Lifetime Customer Support Guarantee

¹ Complies with European Noise Level Requirements ² Exchange



Blackhawk

+1 (254) 755-6711 + info@blackhawk.aero + www.blackhawk.aero